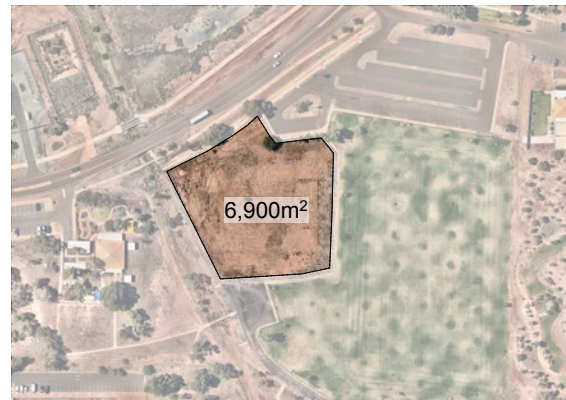


# 01

## Bulgarra Precinct 1 - Preliminary Concept Design

### LEGEND

- 01 ENTRY POINT
- 02 JUMP LINE AND TRAIL START MOUND
- 03 ADVENTURE SKILLS TRAIL
- 04 PUMP TRACK PLATFORM
- 05 PUMP TRACK / "PUMP PARK"
- 06 ASPHALT SURFACE PROGRESSIVE JUMP LINE
- 07 LAWN AREA
- 08 CENTRAL HANGOUT ZONE (SHADED)
- 09 LEARN TO RIDE, BIKE PLAYGROUND
- 10 PUMP TRACK PLATFORM
- 11 RETURN TRAIL



### DESIGN NOTES

The Bulgarra Precinct 1 site is proposed as a more urban approach to the Karratha Bike Park Concept. The site is essentially flat with good access to parking and adjacent amenities.

The centrally located pump track is a large scale fully asphalt surfaced 'pump park' with multiple looping, jump and transfer options.

Around the pump track is a longer asphalt surface dedicated jump line with beginner, intermediate and advanced jumps built into a single 'progressive' line.

Polymer surfaced adventure / skills trail is the final outer element to the park. These will be heavily featured with optional elements to test and build skills.

For the youngest users a concrete learn to ride / bike playground is proposed.

All elements start and finish in a raised central area that will include shade, barbecues, tables, seating, water fountain and lawn.

As for all options, users of all age groups and skill levels will be catered for. Universal access will also be provided to all areas as will strong passive surveillance.

1N





# 01

## BULGARRA LOCATION 1 PRECEDENT IMAGERY

BUILT WORKS, 2020-2023  
COMMON GROUND TRAILS



Percy Doyle Pump Track nearing completion



Asphalt Jump Line



Typical Berm



Asphalt Learn to Ride Track Type



Feature Line Marking



Skills Development Features



Integrated Rock Landscaping Example



Entry Signage



Typical Double Roller





# 02

## Bulgarra Precinct 2 - Preliminary Concept Design

### LEGEND

- 01 ENTRY POINT
- 02 CENTRAL HANGOUT AREA (SHADED)
- 03 ACCESS TO OVAL FOR EVENTS
- 04 CONNECTION TO SKATEPARK
- 05 LEARN TO MTB, NATURE PLAY
- 06 PUMP TRACK PLATFORM (SHADED)
- 07 PUMP TRACK - TECH/RACE
- 08 DRAINAGE CHANNEL
- 09 DRAINAGE CROSSING
- 10 MTB STYLE JUMP PARK
- 11 JUMP LINE START MOUND
- 12 BEGINNER LINE
- 13 INTERMEDIATE LINE
- 14 ADVANCED LINE
- 15 SKILLS LOOP TRAIL
- 16 VEGETATION BUFFER



### DESIGN NOTES

The Bulgarra Precinct 2 site is larger, yet more constrained than the first, with the large drainage channel splitting the site in half. A more linear approach has been taken to deal with the split site.

A medium sized asphalt pump track with an optional jump line has the ability to be used for both general recreation and for timed racing on its main loop when required.

A polymer surfaced jump park is on the northern half. This mountain bike style jump park provides a combination of concrete and timber kickers and features. Dedicated lines for beginners, intermediate and advanced users will share a return to start line.

A learn to MTB track for the youngest users will get them into simple but fun small scale features as they prepare to move to the next level.

Providing circulation / access to the park elements is a skills loop trail, where natural elements will be used to create optional challenges.

Shade is provided at both the pump track and jump track start mounds as well as the central hangout area. The central area will also include barbecues, tables and seating, water fountain and a lawn area.

1N

0m 50m



BULGARRA LOCATION 2  
PRECEDENT IMAGERY

BUILT WORKS, 2020-2023  
COMMON GROUND TRAILS



Progressive Jumps



Balance Feature Example



Typical Roller



Optional Lines



Community Pumped for Challenge Park



Alternative Features



Albany Rollers and Berms

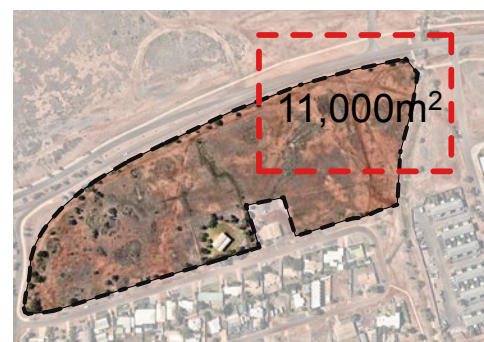


# 03

## Richardson Way - Preliminary Concept Design

### LEGEND

- 01 PUMP TRACK
- 02 LOWER TRAIL HEAD, HANG OUT ZONE (SHADED)
- 03 LAWN AREA
- 04 FENCING TO DETER MOTORBIKES
- 05 UPPER TRAIL HEAD, START HILL WITH SHADE/SHELTER
- 06 CHALLENGE CLIMB
- 07 DESCENDING FEATURE 'FLOW TRAILS'
- 08 DIRT JUMP PARK
- 09 RETURN TRAIL
- 10 BEGINNER JUMP LINE
- 11 INTERMEDIATE JUMP LINE
- 12 ADVANCED JUMP LINE
- 13 BEGINNER TRAIL
- 14 INTERMEDIATE TRAIL
- 15 ADVANCED TRAIL
- 16 RETURN TRAIL
- 17 UNIVERSAL ACCESS GRADE PATH TO START HILL
- 18 ROCK RETAINING
- 19 FITNESS TRAIL



### DESIGN NOTES

The Richardson Way site allows for a slightly more continuous layout, as there are less constraints.

A raised start area / upper trail head is proposed to provide some elevation for a series of asphalt surfaced descending 'feature-flow' trails.

Concrete and timber features on 3 separate lines will bring advanced, intermediate and beginner users down to the lower trail head where they can rest or head back up to the start.

A medium scale asphalt pump track is connected to the lower trail head.

The jumps element proposed is a multi line / multi skill level dirt jump style. This starts for all users at the upper trail head and has a shared return to start line.

To get to the upper trail head there is an accessible grade path as well as a steep challenge climb.

Shade and seating are provided at the upper and lower trail heads.

Parking and other amenities would be considered as part of the broader Richardson Way Park development should this site be selected.





RICHARDSON WAY  
PRECEDENT IMAGERY

BUILT WORKS, 2020-2023  
COMMON GROUND TRAILS



Primary Start Platform



Typical Roller



Typical Berm



Utilising Feature Props Adds Interest



Transfer Complex



Typical Double Roller



01

# Wickham - Site Location Plan





# 01

## Wickham - Preliminary Concept Design

### LEGEND

- 01 LOCATION OPTION 1
- 02 LOCATION OPTION 2
- 03 PRIMARY HANGOUT ZONE
- 04 ALTERNATIVE HANGOUT ZONE
- 05 POSSIBLE FUTURE SKATE PARK/  
PLAZA EXPANSION
- 06 PUMP TRACK START PLATFORM
- 07 PUMP TRACK
- 08 LAWN AREA
- 09 ACCESS PATH



### DESIGN NOTES

The Wickham site is based around a medium sized asphalt surfaced pump and jump track. Standard pump track elements are combined with a progressive jump line to provide skill development and enjoyment for all users.

Supporting the pump track will be two separate hang out areas, this will allow different user groups to have their own space and the ability to share the track at the same time.

Hang out zones will have seating, water fountains and shade.

There are two possible locations for the Wickham track. The first is connection to the existing skate park at rear of the main building. This has the option of a future additional expansion of the skate park.

The second location moves the track away from the rear of the building to a position with better general surveillance and more open outlook to the rest of the external functions.

1N

0m 50m



01

## WICKHAM PUMP TRACK

### PRECEDENT IMAGERY

BUILT WORKS, 2020-2023  
COMMON GROUND TRAILS



Primary Start Platform



Side Winder Sequence



Progressive Jumps



Berm Entry/Exit Double Roller



Feature Line Marking



Hipped Roller



Connected Berms for Pump Track Flow